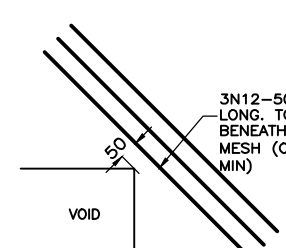
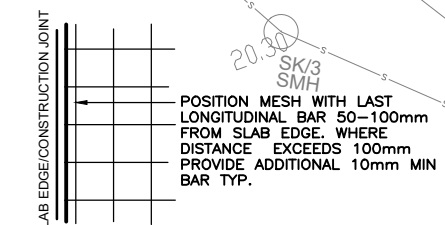


SITE & FOOTING PLAN
SCALE 1:100 (A1), 1:200 (A3)



TYPICAL SLAB RE-ENTRANT CORNER TRIMMER BARS
SCALE NTS



TYPICAL SLAB MESH EDGE DETAIL



ALL UTILITIES ARE TO BE ACCURATELY LOCATED BY CONTRACTOR PRIOR TO CONSTRUCTION. ALL CONSTRUCTION WORK TO COMPLY WITH THE NCC.

RESIDENTIAL SLABS AND FOOTINGS:

- IT IS THE BUILDER'S RESPONSIBILITY TO ENSURE THE STABILITY OF THE STRUCTURE DURING CONSTRUCTION. ADEQUATE TEMPORARY BRACING MUST BE PROVIDED WHERE NECESSARY AND AS DIRECTED BY THE SUPERVISING ENGINEER.
- FOR ALL WATERPROOFING / FLASHING DETAILS REFER TO ARCHITECT'S DRAWINGS.
- THE BUILDER IS TO PROVIDE TERMITE PROTECTION IN ACCORDANCE WITH A.S. 3660.1.
- INFORMATION ON LOCATION AND DEPTHS OF SERVICES AND SERVICES IN EASEMENTS SHOULD BE OBTAINED BY THE BUILDER AND FORWARDED TO THE DESIGN ENGINEER PRIOR TO COMMENCEMENT OF WORKS. ANY AMENDMENTS TO THE DESIGN MAY BE VERIFIED BY THE DESIGN ENGINEER PRIOR TO CONSTRUCTION.
- TILING NOTE: WHERE BRITTLE FLOOR COVERINGS ARE TO BE USED OVER AN AREA GREATER THAN 16m² EXTRA MEASURES SHALL BE TAKEN TO CONTROL THE EFFECT OF SHRINKAGE CRACKING, SUCH MEASURES TO BE BASED ON THE RECOMMENDATIONS SET OUT BELOW: (BASED ON CLAUSE 5.3.7 OF AS2870),
 - INCREASE REINFORCEMENT TO SL92 MIN. FABRIC OR EQUIVALENT.
 - ALLOW A MIN. PERIOD OF (3) MONTHS CURING OF CONCRETE PRIOR TO PLACEMENT OF ANY BRITTLE FLOOR COVERINGS.
 - A FLEXIBLE BEDDING MATERIAL SHOULD BE USED FOR THE FIXING OF FLOOR TILES.
- GLASS BALUSTRADE SELECTION AND FIXING TO BE IN ACCORDANCE WITH THE SUPPLIER'S SPECIFICATION AND AS1288 - GLASS IN BUILDINGS, AS1170 - STRUCTURAL DESIGN ACTIONS AND THE NCC.

SLAB AND FOOTING TABLE:

SLAB/FOOTING SPECIFICATIONS:	
SLAB THICKNESS (mm):	100 uno
RESIDENCE POD DEPTH (mm):	-
GARAGE POD DEPTH (mm):	-
PATIO POD DEPTH (mm):	-
FABRIC:	SL82 uno
TOP COVER: 20mm INTERNAL,	
TOP COVER: 40mm EXTERNAL	
EDGE BEAM REBATE (mm) TYP:	172
GARAGE EDGE BEAM REBATE (mm):	-
STRIP FOOTING SF1: W x D (mm)	-
STRIP FOOTING SF2: W x D (mm)	-
TIE BEAM: W x D (mm)	300x300
EDGE BEAM EB1: W x D (mm)	-
EDGE BEAM EB2: W x D (mm)	-
INTERNAL BEAM IB1: W x D (mm)	-
INTERNAL BEAM IB2: W x D (mm)	-

RESIDENTIAL PIER TABLE:

SITE CLASS	PIER DEPTH (m)		
	0 - 1.0	1.0 - 2.5	2.5 - 3.5
M	2 - N16	4 - N16	4 - N16
H	-	-	-
E	-	-	-

** REFER TO ENGINEER WHERE >3.5m.

6.7.22 01 - CC. ISSUE

DATE: DRAWING ISSUE:

CLIENT: WITE

PROJECT: PROPOSED RESIDENTIAL DEVELOPMENT
128 GLENROCK PARADE
KOOLEWONG, NSW

CivilCol Consulting Pty Ltd
ABN: 74639805920 | EMAIL: civilcolconsulting@gmail.com
PH: 0413 857 887 | P.O. BOX 3176, WAMBERAL NSW 2260

DRAWN: JF	APPROVED:
CHECKED: CF	
DATE: 6.7.22	
JOB: 2022_022	C. FISHER, BE, MIEAust, CPEng, NER 719120, (CIVIL AND STRUCTURAL)
DRG: S 02	REV: 01 SH: 2 of 6